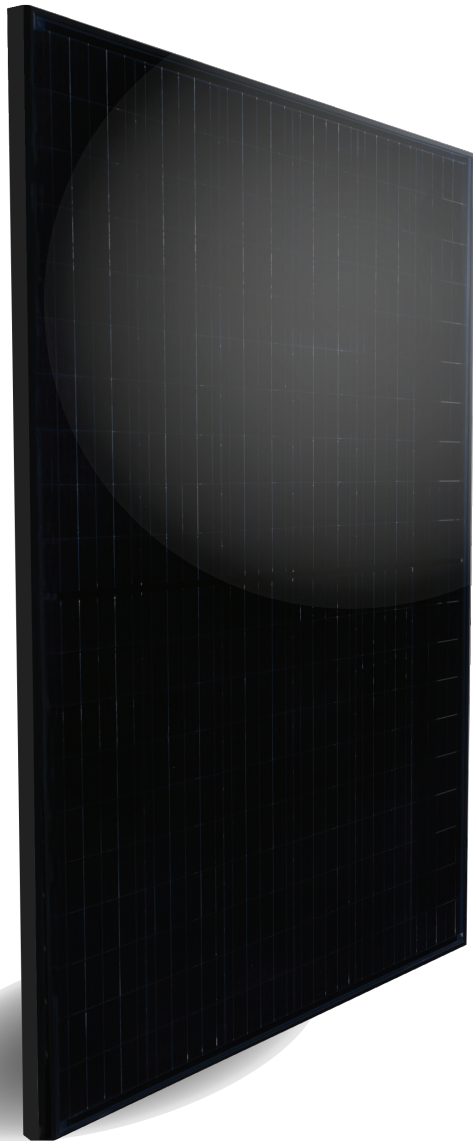


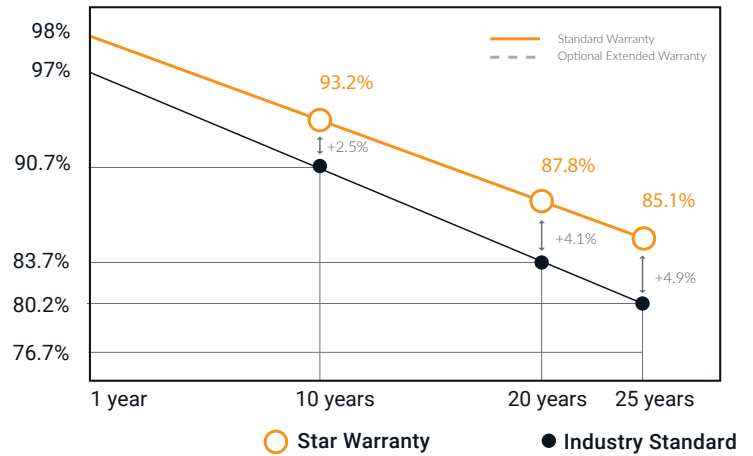
440W Power Output



star solar



Linear Performance Warranty



Features



Advanced split cell technology with 10 ultra-thin busbars allow for less resistance and maximum photon capture



All-black design for pristine aesthetics
No excessive silver bussing or ribbons



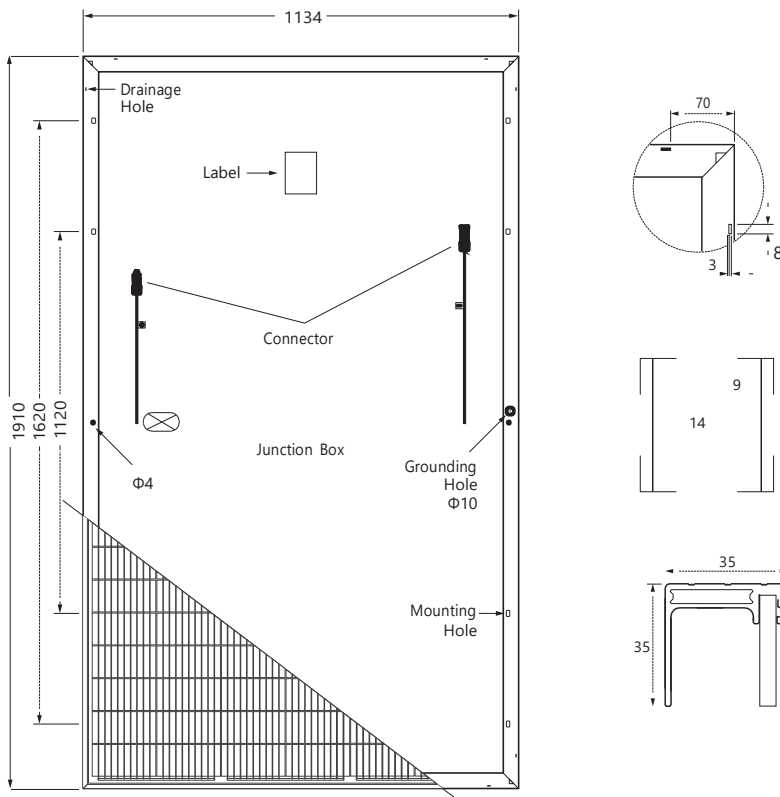
Ideal solution for applications affected by shading



Robust product design is resilient in extreme weather. Up to 6200 Pa snow load and 210 mph wind speeds



star solar



Electrical Specifications

STAR-MF10-440W

STC Rated Output (Pmax)	440W
Module Efficiency (%)	20.31%
Open Circuit Voltage (Voc)	41.2V
Short Circuit Current (Isc)	13.54A
Maximum Power Voltage (Vmp)	34.5V
Maximum Power Current (Imp)	12.74A

NOCT: Irradiance 800w/m², Cell temperature 20°C, Spectrum AM1.5, Wind speed 1m/s
 STC: Irradiance 1000w/m², Cell temperature 25°C, Spectrum AM1.5

Module Design

Cell Type	Mono 182x91mm
Weight	24kg
Dimensions	1910x1134x35mm(LxWxT)
Cables	4.0mm ² , Protrait: 300mm(+)/400mm(-)
No. of Cells	Landscape: 1400mm(+)/1400(-) 120 (6X20)
Glass	3.2mm high transmission, antireflection coating
Junction Box	IP68, 3 bypass diodes
Connector	MC4
Packing	31pcs/pallet, 744pcs/40HQ

Temperature Ratings

Temperature Coefficients Pmax	-0.37%/°C
Temperature Coefficients Isc	+0.05%/°C
Temperature Coefficients Voc	-0.29%/°C
Normal Operating Cell Temperature (NOCT)	45°C ± 2°C

Certifications

intertek

CE



UL61730-1, UL61730-2

Test Operating Conditions

Maximum Series Fuse	25A
Maximum System Voltage	1,500 VDC (UL&IEC)
Maximum Load Capacity (Per UL 1703)	5400 PA Snow Load / 210mph Wind Rating
Fire Performance Class	Class C/Type 1